



CHEMICALS & ENERGY-SUPPORT PORTFOLIO

IN STRATEGIC PARTNERSHIP WITH





EXTREME FUEL & LUBE SUPPLIES CC



Clearing & Forwarding | Logistical Supplies | Ship Chandling | Fuel & Lubricants

Extreme Fuel & Lube Supplies CC is a Namibia-based service provider delivering integrated fuel, lubrication and logistics support solutions to clients operating within the maritime, transport, and industrial sectors. The company specializes in fuel and lubricant supply, ship chandling, clearing and forwarding, and the sourcing of essential logistical supplies required for efficient day-to-day operations.

With a strong focus on reliability, responsiveness, and operational efficiency, Extreme Fuel & Lube Supplies supports clients by ensuring critical supplies are delivered on time, with service standards aligned to the demands of high-pressure environments such as ports, fleets, and industrial operations.

Core Services

- Fuel & Lubricants Supply
- Ship Chandling
- Clearing & Forwarding
- Logistical Supplies

Industries Served

- Maritime & Shipping
- Logistics & Transport
- Industrial Operations
- Energy Sector Support Services



STRATEGIC PARTNERSHIP & SUPPLY CAPABILITY



Extreme Fuel & Lube Supplies CC x Suvira Energy

Extreme Fuel & Lube Supplies CC has entered into a strategic partnership with Suvira Energy to expand its supply capability and product offering within the energy, maritime, logistics, and industrial sectors. Through this partnership, Extreme Fuel & Lube Supplies can facilitate access to a wide spectrum of high-quality chemical products at competitive pricing, supported by reliable sourcing and professional supply coordination across SADC.

Suvira Energy delivers chemical solutions across multiple applications, including drilling, cementing, completion, workover, stimulation, production, refining, rubber vulcanization, agriculture, pharmaceutical and environmental chemicals. This capability is backed by a knowledgeable and experienced team, with a commitment to innovation, consistent performance, and optimized results—ensuring clients receive dependable solutions that meet evolving operational demands. SE_Chemical Portfolio

This partnership positions Extreme Fuel & Lube Supplies CC as a localized coordination and supply partner for specialized chemical requirements, supported by an international product principal.



PRODUCTS OFFERED THROUGH THIS PARTNERSHIP



Extreme Fuel & Lube Supplies CC x Suvira Energy

Through the Suvira Energy partnership, Extreme Fuel & Lube Supplies CC can facilitate the sourcing and supply of the following categories:

Oil & Gas Specialty Chemicals

- Drilling Chemicals
- Production Chemicals
- Cementing Additives
- Workover & Completion Additives
- Premium Additives

Industrial & Process Chemicals

- Detergents & Surfactants
- Refinery Chemicals
- Commodity Chemicals
- Speciality Chemicals

Water & Environmental Solutions

- Water Treatment Chemicals
- Operational performance and environmental chemical solutions

Additional Chemical Categories

- Pharmaceutical APIs and Intermediates
- Oleochemicals, Oleofins, PVC & Resins
- Agrochemicals

THE FULL PRODUCT LISTS ARE PROVIDED IN THE FOLLOWING SECTION OF THIS PORTFOLIO.



DRILLING CHEMICALS



- MAGNESIUM OXIDE (LIGHT)
- POTASSIUM CARBONATE
- POTASSIUM CHLORIDE
- POTASSIUM HYDROXIDE
- POTASSIUM FORMATE
- SODA ASH
- CALCIUM CALCIUM
- CHLORIDE OLEIC ACID (LIQUID)
- STEARIC ACID
- ETHYL MERCAPTAN (LIQUID)
- POLYOL (GRADE I & II)
- TRI-ETHYLENE GLYCOL (LIQUID)
- SODIUM DODECYL SULPHATE
- POLYVINYL ALCOHOL (LIQUID)
- OXYGEN SCAVENGER
- XC-POLYMER
- XCD-POLYMER
- POLYANIONIC CELLULOSE (PAC)
- CARBOXY METHYL CELLULOSE (CMC)
- BARITE POWDER
- BENTONITE POWDER
- POLYAMINE
- WAX DISSOLVER
- SODIUM CHLORIDE
- POTASSIUM CARBONATE FIBER
- PARAFFIN DISSOLVER
- GROUND WALNUT SHELLS (ALL GRADES)
- OBM THINNER
- POLYMER MUD THINNER
- SHALE CONTROL ADDITIVE
- SIZED CARBONATE
- LOW, MEDIUM CLOUD POINT GLYCOL
- GILSONITE
- CAUSTIC SODA
- CHROME FREE LIGNO SULPHONATE
- DRILLING MUD DETERGENT
- RESINATED POLYMER
- LIME
- SODIUM POLYPHOSPHATE
- SODIUM BICARBONATE
- LIQUID DEFOAMER
- MICA (ALL GRADES)
- GROUND MARBLE (ALL GRADES)
- COTTON SEED HULLS
- RIG WASH





DRILLING CHEMICALS



- SHREDDED WOOD FIBERS
- ASSORTED SIZES PRODUCT
- CELLOPHANE FLAKES
- SPECIALTY LCM, TYPE-I (NON-RESERVOIR TYPE)
- SPECIALTY LCM, TYPE-II (RESERVOIR TYPE)
- PRIMARY EMULSIFIER
- SECONDARY EMULSIFIER
- VISCOSIFIER
- OIL WETTING AGENT
- GELLING AGENT
- HT FLUID LOSS AGENT
- SPECIALTY OIL MUD ADDITIVE-A & B
- SPECIALTY LCM, FOR OBM
- HIGH DENSITY WEIGHTING AGENT/HEMATITE
- PIPELEX
- H₂S SCAVENGER (LIQUID/SOLID)
- FLUID / LOSS CONTROL AGENT FOR SALT MUD
- LUBRICANT FOR WATER BASE MUD
- BACTERICIDE/BIOCIDE (LIQUID)
- CITRIC ACID
- ACETIC ACID
- FORMIC ACID
- SODIUM FORMATE
- EP LUBE
- HP LUBE
- MUD LUBRICANTS
- SHALE CONTROL ADDITIVE
- SOLVENT FOR ASPHALTENE
- PHPA (LIQUID/SOLID)
- MODIFIED POLYSACCHARIDES
- POLYMERIC LCM
- SPECIALTY ITEM FOR POLYMER MUD
- CALCIUM CARBONATE (ALL SIZES)
- FILTRATION CONTROL AGENT
- EMULSIFIER
- LUBRICATING AGENT
- ROP ENHANCER
- NON-OIL BASE LUBRICANT
- WELLBORE REMEDIATION AGENT
- WELLBORE STRENGTHENING AGENT
- GLYCOL ADDITIVE
- SWEEPING AGENT (NON-PHPA)
- TORQUE REDUCER - LUBRICANT
- SOLID LUBRICANT
- WATER BASE SPOTTING FLUID
- MICRO-FRACTURE SEALING AGENT
- HOLE STABILIZER
- SHALE STABILIZER
- MAGNESIUM OXIDE
- STARCH (MODIFIED/NORMAL)
- CALCIUM BICARBONATE





PRODUCTION CHEMICALS



- DE-OILER
- DE-EMULSIFIER
- OIL SOLUBLE DE-EMULSIFIER
- PROPPANT FOR HYDROFRACK
- PARAFFIN DISSOLVERS
- FLOW IMPROVERS
- ANTI-SCALING AGENT
- DRAG REDUCING AGENT (DRA)
- ASPHALTENE INHIBITORS
- HYDRATE INHIBITORS
- WATER CLARIFIERS
- BARIUM STRONTIUM SULFATE
- FERROUS SULFIDE SCALE NEUTRAL DESCALING AGENT
- PLUGGING REMOVER
- SILICA SCALE AND SHALE REMOVER
- POLYMER SCALE REMOVER
- WATER-SOLUBLE HEAVY OIL VISCOSITY REDUCER

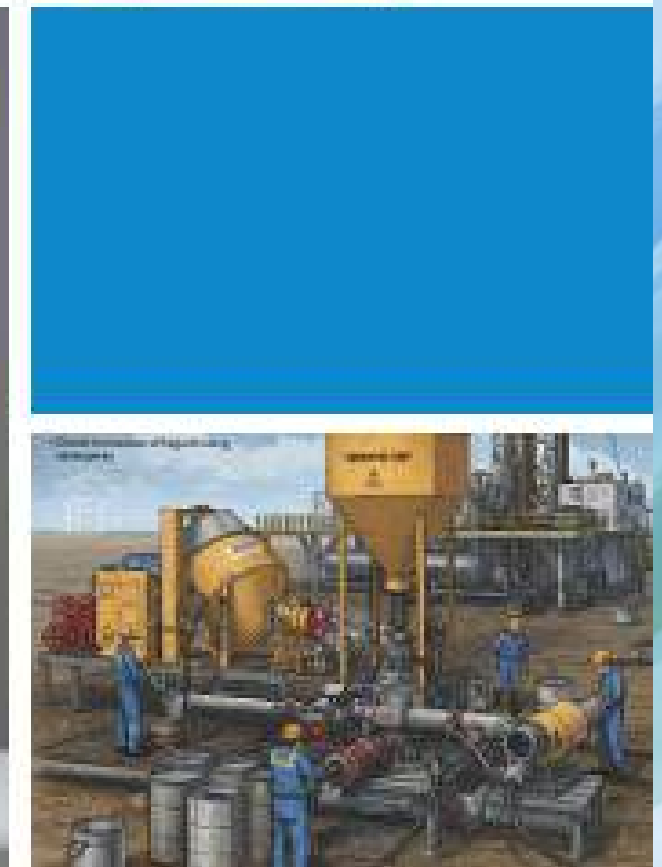




CEMENTING ADDITIVES



- ACCELERATORS (CA_{CL}2, NA_{CL} ETC.)
- LOW TO MODERATE TEMP CEMENT RETARDER
- HIGH TEMP CEMENT RETARDER
- FLUID LOSS CONTROL AGENTS
- HIGH TEMP FLUID LOSS RETARDER
- ANTI-SETTLING CEMENT ADDITIVE
- GAS MIGRATION CONTROL ADDITIVES
- EXTENDERS (BENTONITE, FLY ASH ETC.)
- WEIGHING AGENTS (BARITE, HEMATITE ETC.)
- LOSS CIRCULATION MATERIAL
- SYNTHETIC GELLING AGENT
- VISCOSIFIER
- MICROFINE CEMENT (NORMAL & PREMIUM GRADE)
- SODIUM META SILICATE (ANHYDROUS & PENTAHYDRATE)
- LIME MICA (MEDIUM & FINE)
- SODIUM META SILICATE)
- ANTI-FOAMING AGENTS
- DEFOAMERS
- DISPERSANTS
- EXPANDING AGENTS (MGO₂, ALUMINUM POWDER)





PREMIUM ADDITIVES



- HOLE STABILIZER
- SHALE STABILIZER
- SHALE/HOLE CONDITIONER
- PH BUFFER
- SWEEPING AGENT
- BIT BALLING PREVENTER
- WATER BASE SPOTTING FLUID
- SHALE CONTROL ADDITIVE
- MICRO-FRACTURE SEALING AGENT
- SOLID LUBRICANT
- TORQUE REDUCER
- SOLID LUBRICANT
- WELLBORE AGENTS (REMEDICATION & STRENGTHNING)





DETERGENTS & SURFACTANTS



- CAPB 35%
- CDEA
- NP9
- LABSA 96 %
- GLYCERIN
- AMINE OXIDE
- PROPYLENE GLYCOL
- EGME
- BUTYL POLYGLYCOL
- BUTYL TRI GLYCOL
- FERRIC NITRATE 40% (FE 9.5%), INDUSTRIAL GRADE
- FATTY ACID ESTER (C-18)
- TRILON M-CT
- SODIUM TRIPOLYPHOSPHATE (STPP)
- LINEAR ALKYL BENZENE SULPHONIC ACID (LABSA)
- SODIUM ALUMINOSILICATE (4A ZEOLITE)
- SODIUM SULPHATE ANHYDROUS (SSA)
- SODIUM CARBONATE ANHYDROUS (SODA ASH LIGHT)
- SODIUM SILICATE (WATER GLASS)
- SODIUM METASILICATE PENTAHYDRATE
- CAUSTIC SODA (PEARLS & FLAKES)

- SODIUM PERCARBONATE
- COLORFUL SPECKLES
- OPTICAL BRIGHTENING AGENTS
- SODIUM LAURYL ETHER SULFATE (SLES)
- ALPHA OLEFIN SULPHONATE (AOS)
- FATTY ALCOHOL POLYOXYETHYLENE ETHER (AEO-9)
- METHYL ETHYL KETONE (MEK)
- METHYL ISOBUTYL KETONE (MIBK)
- METHOXY PROPANOL
- HYDROXYPROPYL METHYLCELLULOSE (HPMC)
- A-OLEFIN SULFONATE
- FRAGRANCES (DETERGENT RAW MATERIALS)

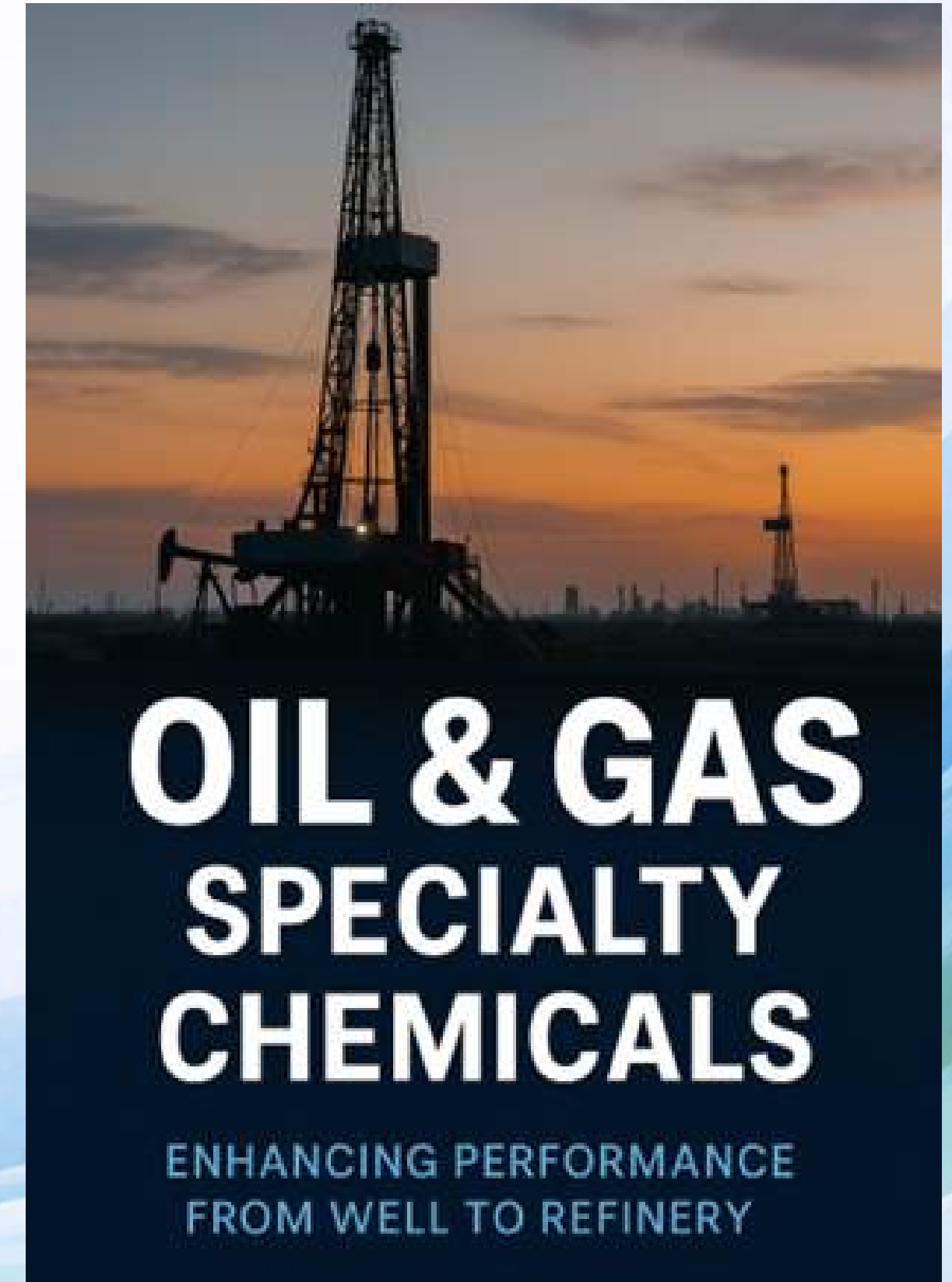




REFINERY CHEMICALS



- PHPA (POLYHYDRO PHOSPHORUS ACID)
- AMINES
- SILICONES
- ETHOXYLATED PHENOLS
- GLYCOLS
- FATTY ACID
- DIMETHYL DISULFIDE
- MONOMETHYLAMINE (N-METHYLANILINE, MMA)
- MTBE
- TETRACHLORETHYLENE (PERCHLORETHYLENE)
- ANTIFOULANTS
- SCALE INHIBITORS
- BIOCIDES
- PH ADJUSTERS
- COAGULANTS & FLOCCULANTS
- REVERSE OSMOSIS ANTISCALANTS
- FCC CATALYSTS
- HYDROTREATING CATALYSTS
- HYDROCRACKING CATALYSTS
- REFORMING CATALYSTS
- CETANE IMPROVERS
- OCTANE BOOSTERS
- ANTIOXIDANTS
- COLD FLOW IMPROVERS
- DYES & MARKERS
- DEGREASERS
- SLUDGE DISPERSANTS
- PIGGING CHEMICALS
- CHEMICAL CLEANERS
- DEMULSIFIERS
- CORROSION INHIBITORS
- H₂S SCAVENGERS
- ANTIFOULANTS
- NEUTRALIZING AMINES
- OXYGEN SCAVENGERS
- DEFOAMERS



OIL & GAS SPECIALTY CHEMICALS

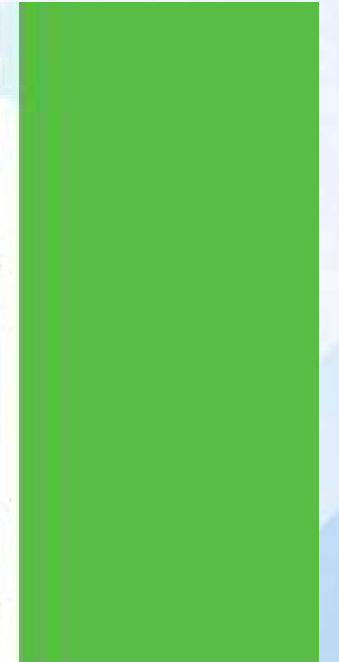
ENHANCING PERFORMANCE
FROM WELL TO REFINERY



WATER TREATMENT CHEMICALS

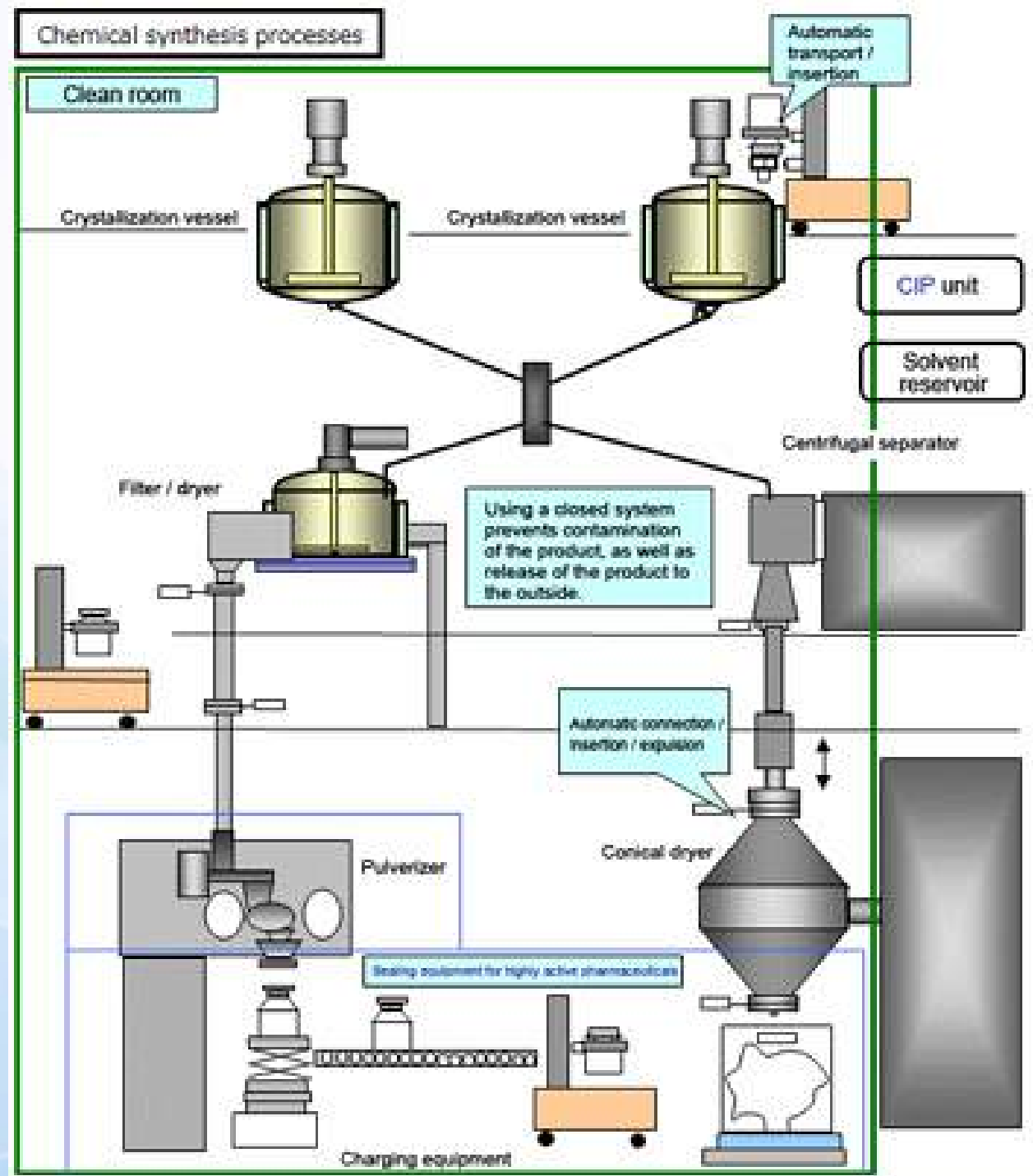


- SODIUM HYDROXIDE (NAOH)
- HYDROGEN PEROXIDE (H₂O₂)
- ALUMINUM SULFATE
- POLYALUMINUM CHLORIDE (PAC)
- FERRIC CHLORIDE
- FERRIC SULFATE
- POLYACRYLAMIDE
- SODIUM HYPOCHLORITE
- CALCIUM HYPOCHLORITE
- CHLORINE DIOXIDE
- OZONE (O₃)
- SULFURIC ACID
- CALCIUM HYDROXIDE
- AMMONIA
- PHOSPHATES (ALL DERIVATIVES)
- ZINC ORTHOPHOSPHATE
- ACTIVATED CARBON
- HYDROCHLORIC ACID
- SODA ASH (SODIUM CARBONATE)
- SLUDGE CONDITIONERS / DEWATERING AIDS
- DECHLORINATORS
- CHELATING AGENTS
- BIOCIDES
- ANTIFOAMING AGENTS
- CORROSION AND SCALE INHIBITORS
- FLOCCULANTS
- SULPHATES (ALL DERIVATIVES)





PHARMACEUTICAL APIS AND INTERMEDIATES



- PARACETAMOL (ACETAMINOPHEN)
- IBUPROFEN
- OMEPRAZOLE
- METFORMIN
- SIMVASTATIN
- ASPIRIN (ACETYLSALICYLIC ACID)
- AMOXICILLIN
- CIPROFLOXACIN
- PREDNISON
- CLINDAMYCIN
- ATORVASTATIN
- ACETAMINOPHEN PRECURSORS
- CASTOR OIL (ALL GRADES)
- ACETONE
- ISOPROPYL ALCOHOL (IPA)
- PHENOL





OLEOCHEMICALS | PVC & RESINS | OLEOFINS



- FATTY ACIDS
- FATTY ALCOHOLS
- FATTY ACID ESTERS
- GLYCEROL (GLYCERIN)
- FATTY AMIDES
- FATTY ACID DERIVATIVES
- SOAP AND SURFACTANTS
- BIODIESEL
- TOCOPHEROLS
- LECITHIN
- PINE OIL
- PALM OIL
- POLYOLEFINS
- POLYSTYRENES
- POLYESTERS
- POLYAMIDES (NYLONS)
- EPOXY RESINS
- POLYESTER RESINS
- ACRYLIC RESINS
- POLYURETHANE RESINS
- OLEOFINS
- ETHYLENE (C₂H₄)
- PROPYLENE (C₃H₆)
- BUTYLENE (C₄H₈)
- ISOBUTYLENE

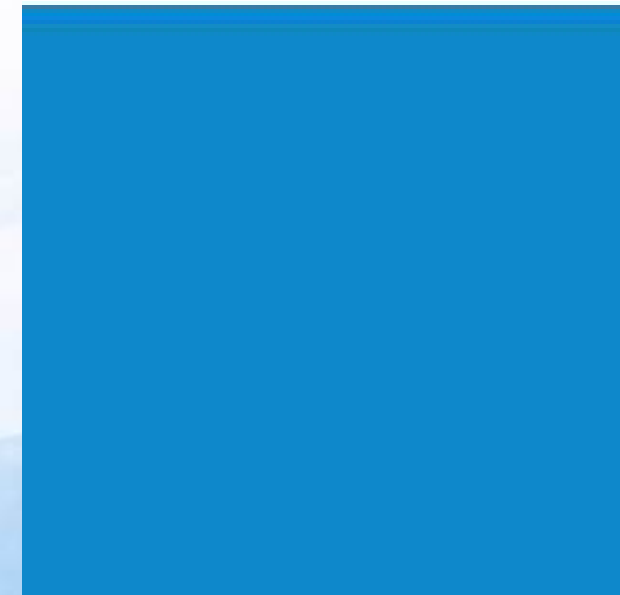




AGROCHEMICALS



- UREA
- DIAMMONIUM PHOSPHATE (DAP)
- MONOAMMONIUM PHOSPHATE (MAP)
- POTASSIUM NITRATE
- AMMONIUM SULFATE
- CALCIUM AMMONIUM NITRATE (CAN)
- NPK BLENDS (NITROGEN, PHOSPHORUS, POTASSIUM)
- MICRONUTRIENT MIXTURES (ZN, FE, MN, CU-BASED)
- GLYPHOSATE
- ATRAZINE
- 2,4-DICHLOROPHENOXYACETIC ACID (2,4-D)
- PARAQUAT
- MALATHION
- CARBARYL
- ACETAMIPRID
- THIAMETHOXAM
- IMIDACLOPRID
- CYPERMETHRIN
- PERMETHRIN
- MANCOZEB
- DIFENOCONAZOLE
- AZOXYSTROBIN
- CHLOROTHALONIL
- CAPTAN
- THIRAM
- RODENTICIDES
- AMMONIA
- SULFURIC ACID
- AMMONIUM SULPHATE
- ZINC SULPHATE





COMMODITY CHEMICALS | SPECIALITY CHEMICALS



COMMODITY CHEMICALS

- NITRIC ACID
- POTASSIUM FORMATE (POWDER/ LIQUID)
- GRAPHITE H/M/C
- TPO – TIRE PYROLYSIS OIL
- ETHYLENE DICHLORIDE (C₂H₂CL₂)
- XYLENE
- TOLUENE

SPECIALITY CHEMICALS

- BORON OXIDE
- PHOSPHORUS PENTOXIDE
- ETHYLENE OXIDE DERIVATIVES
- PROPYLENE GLYCOL
- TOLUENE DIISOCYANATE (TDI)
- METHYLENE DIPHENYL DIISOCYANATE (MDI)
- PHTHALIC ANHYDRIDE
- FORMALDEHYDE DERIVATIVES
- ADIPIC ACID
- TITANIUM DIOXIDE (TiO₂)



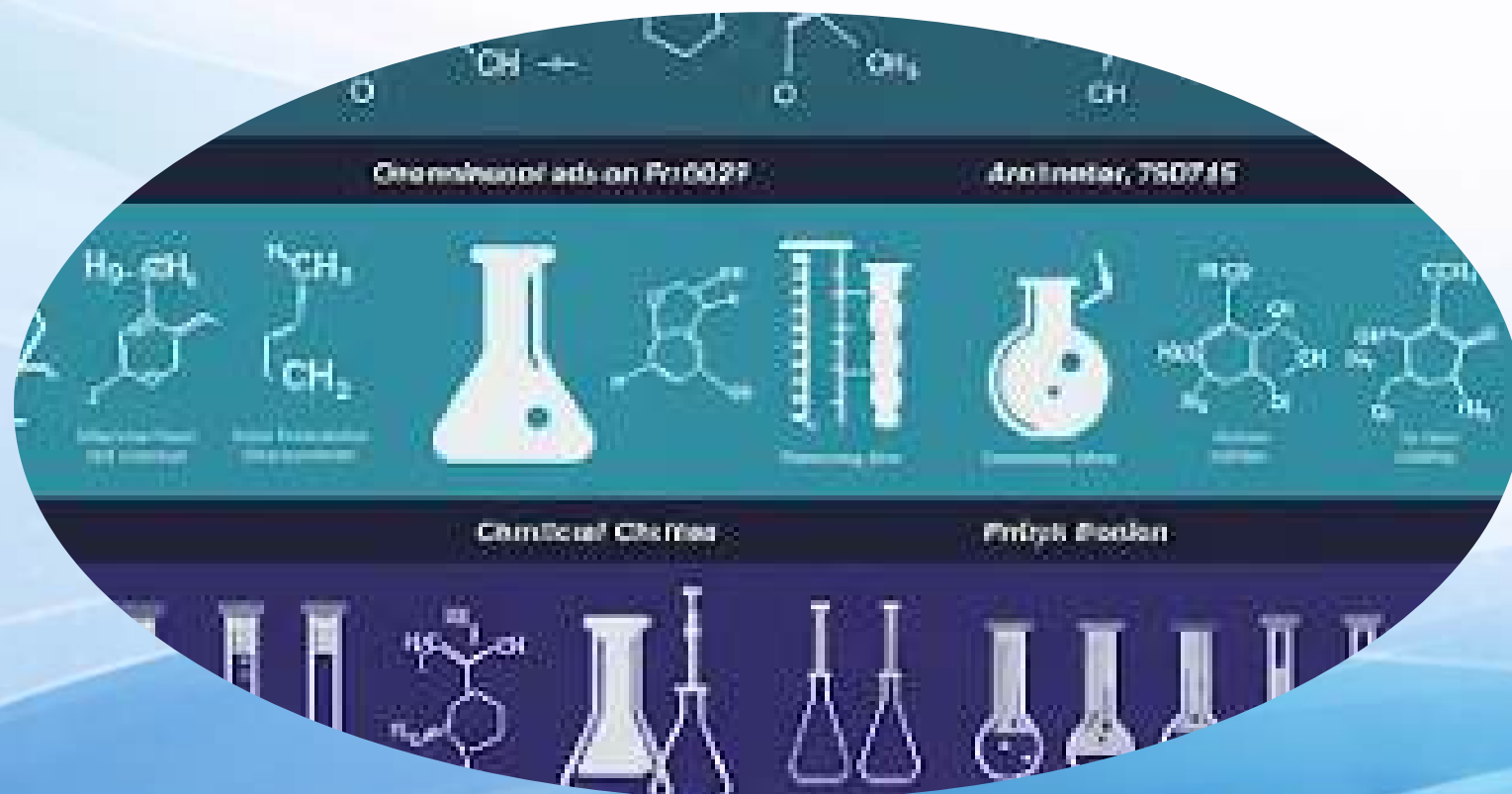


CHEMICAL PORTFOLIO — SUMMARY



IN ADDITION TO OUR COMPREHENSIVE RANGE OF CHEMICALS FOR DRILLING, CEMENTING, COMPLETION, WORKOVER, STIMULATION, PRODUCTION, REFINING, AND ENVIRONMENTAL APPLICATIONS, WE ALSO OFFER SPECIALIZED SOLUTIONS TAILORED TO UNIQUE OPERATIONAL NEEDS.

OUR PORTFOLIO INCLUDES WATER TREATMENT CHEMICALS, FRACKING ADDITIVES, CRUDE OIL ENHANCERS, RUBBER VULCANIZATION AGENTS, AGRICULTURAL, PHARMACEUTICAL, AND OTHER ESSENTIAL CHEMICALS—DESIGNED TO ENHANCE EFFICIENCY AND MAXIMIZE PERFORMANCE ACROSS EVERY STAGE OF OPERATIONS.






GET IN TOUCH

Mr. Jimmy Shanjengange

 +264 81 285 4303 | +264 81 602 0444

 efls@iway.na

 Walvis Bay, Namibia





THANK YOU

FOR YOUR ATTENTION

We look forward to working with you!